



PHASE 2a

K-12 School, Childcare, and Youth Camp Staff

WHO

All staff working in New Hampshire:

- K-12 schools
- Licensed child care settings
- License-exempt settings enrolled with the NH DHHS - Bureau of Child Development
- Municipal or other recreation programs providing before and/or after school, vacation, or summer youth programming
- Head Start and Early Head Start programs
- Youth camps

HOW

There are two paths for Phase 2a vaccinations:

1. At a regional clinic managed by your organization and Regional Public Health Network
2. At a state or hospital run public clinic

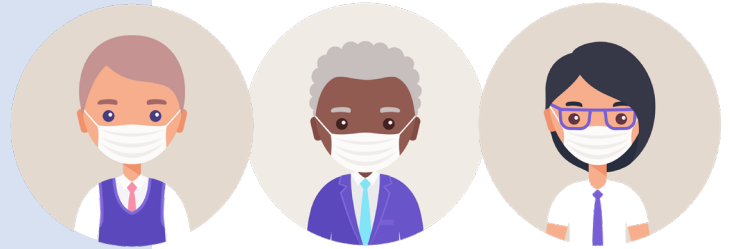
WHEN

Important Date for Regional Clinics:

- **March 12th:** Regional vaccination clinics can begin, subject to regional scheduling. Look for more information from your employer

Important Dates for State/Hospital Clinics:

- **March 17th:** Registration opens for Phase 2a vaccination at state or hospital run public clinics
- **March 22nd:** Vaccination appointments start for Phase 2a at state or hospital run public clinics



WHAT DO I NEED TO BRING

At the time of vaccination, all Phase 2a vaccine recipients must bring:

- A driver license or non-driver ID card

And one of the following:

- A payroll check, payroll document, or employment contract showing your employment at a school, childcare facility, or youth camp, dated within the last 60 days.
- A letter on school, childcare facility, or youth camp letterhead stating that you meet Phase 2a eligibility.
- A photo identification card issued by a school, childcare facility, or youth camp

